

Balloon

Pos.

Qty.

B

C

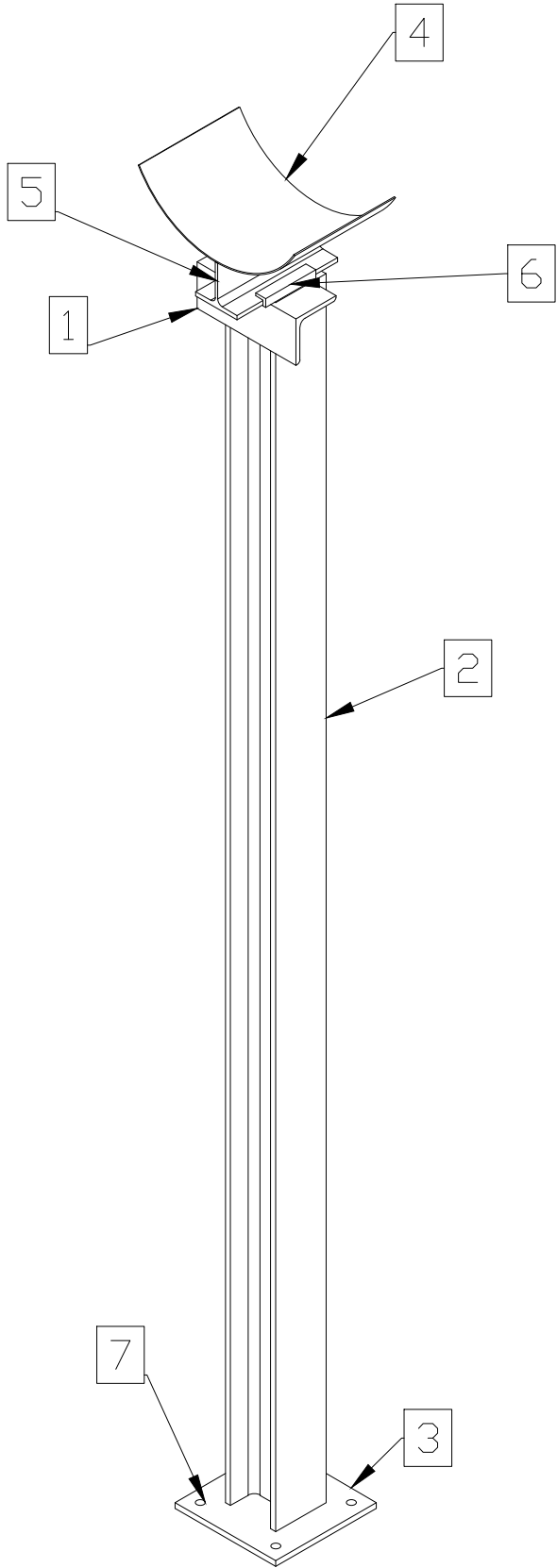
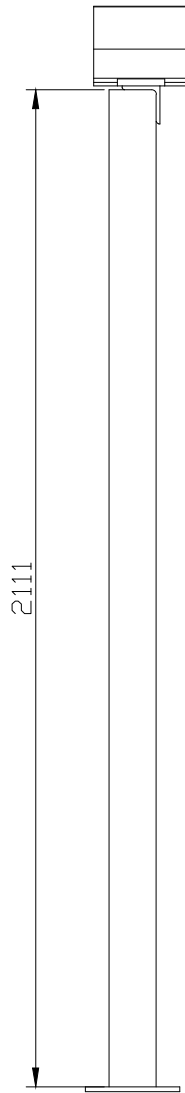
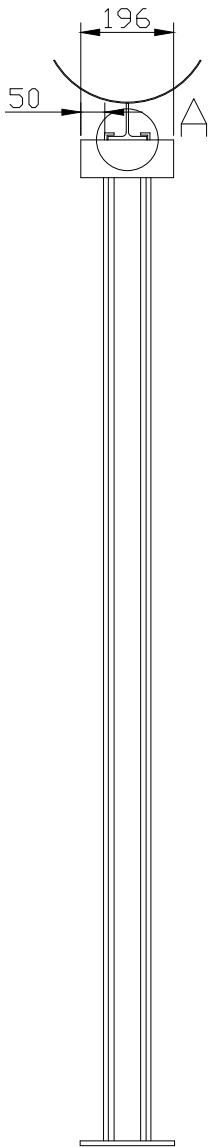
D

E

F

G

This drawing belongs to IFI Industrial Furnaces INSERTEC and must not be used or reproduced without authorization.



BILL OF MATERIALS			
ID	QT (Ud/M)	DESCRIPTION	MATERIAL
1	0.196	L 80x80x8	S235JR
2	2.111	HEB 100	S235JR
3	1	S235JR PLATE 200x200x10	S235JR
4	0.2	S235JR L PLATE 15x20x5	S235JR
5	0.2	IPE 160	S235JR
6	0.2	AISI316L PLATE L=375mm (Thickness 2mm)	S235JR
7	4	ANCHOR BOLT M12x120 8.8	8.8

QTY: 2 UNIT

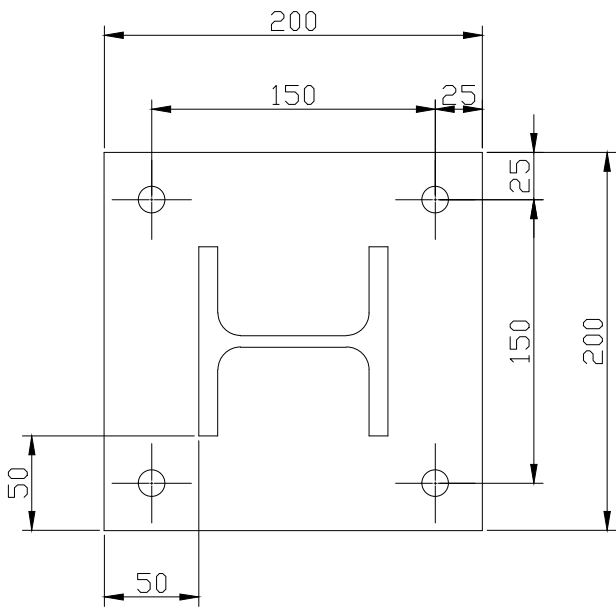
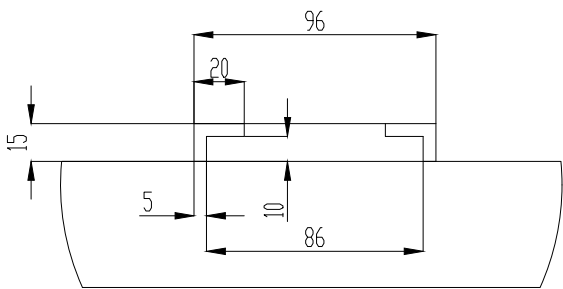
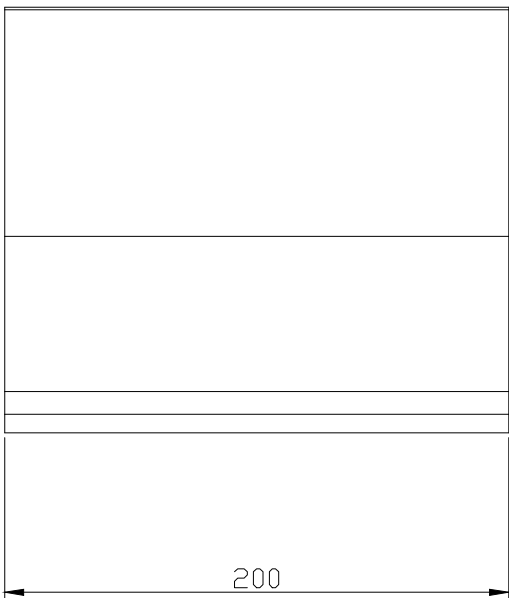
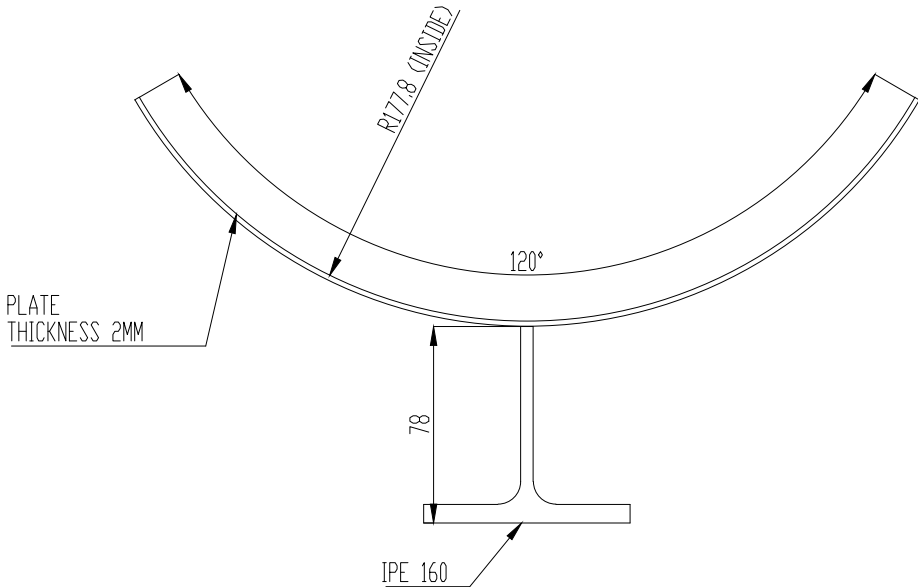


PLATE 3



DETAIL A



UNSPECIFIED WELDS:

JOINT WITHOUT BEVEL

40%

JOINT WITH BEVEL

70% 70%

50-100 50-100

REINFORCEMENT JOINT

80%

PIPE/PROFILE JOINT

40% 40%

PLATE SPLICING

Note: Percentage (%) of the weld in relation to the smallest section of the weld joint.

Non-individual tolerances according to DIN 7168.					Drawn 3D:	
	10-50	50-120	120-400	>400	Drawn 2D:	
	±0,5°	±0,33°	±0,16°	±0,083°	Date:	
	6-30	30-120	120-315	315-1000	1/12/2025	
	±0,2	±0,3	±0,5	±0,8	±1,2	

Oxygen Route

TMT (FVRB-2,7-25)

Rev.

A

N° Drawing:

2558-331X-TMT-ESR10-SUP10

Scale

1:40

Weight (kg)

Sheet

1 of 1

Format

A2

insertec

Furnaces & Refractories

1st Dihedral

ISO 5456-2

8

9

10